

# FRIDAY FLASH

Eden Hall Upper Elementary School

September 1, 2023

## In This Issue

- Weely Principal Update
- Nurse Seeking Donations
- Student Directories Available
- Student Art Contest
- After School Programs

## Quick Links

- [Eden Hall Upper Elementary](#)
- [Calendar of Events](#)
- [Breakfast and Lunch Menu](#)
- [Cafeteria Account](#)
- [Eden Hall PTO](#)

## Message from the Principals

We have completed our first full week of the 23- 24 school year! We look forward to sharing some of the exciting and engaging activities occurring throughout our building that continue to align with our building theme, "Let's Grow Together: Growing Hearts and Growing Minds."

[Read More](#)



## Nurse Seeking Donations

The school nurse is seeking donations of girls' underwear of all sizes. New in package only. Donations may be dropped off at the front office or in the nurse's office. Thank you!



## Student Directories Available

EHUE directories will be on sale at Parent Nights for \$5. Cash or check will be accepted. You may also [place an order online](#) to have the directory sent home with your child, or [send this order form](#) to school with a check payable to EHUE PTO.



## Join Exploring Guitar Club

The Exploring Guitar Club is open to all grade levels. Please complete the form at the button below by

**Friday, September 8.** Email Mr. Rickenback at [srickenback@pinerichland.org](mailto:srickenback@pinerichland.org) with questions.

[Read More](#)



## Student Art Contest

Students, help decorate Eden Hall's conference room! Draw a picture of your favorite biome (forest, aquatics, desert, grasslands or tundra). Submit drawings to the main office and be sure to include your name and homeroom teacher on the back. Entries due **September 30**.

[Read More](#)



## After-School Spanish Club

Designed for upper elementary students, this program features foundational vocabulary introduced through games, singing and hands-on activities. Open to new and returning students. Classes are \$95, start **Monday, October 2** and run for six weeks. Register by **September 25**. Contact [jpriore@theenrichmentcompany.com](mailto:jpriore@theenrichmentcompany.com) with questions.



[Read More](#)

## After-School Baker's Dozen Academy

Students will learn the art of working with fondant and decorating techniques all while preparing delicious kid-friendly Halloween desserts to take home. Classes are \$100 and are held for four Mondays starting **Monday, October 9**. Register by **September 22**. Contact [info@bakersdozenacademy.com](mailto:info@bakersdozenacademy.com) with questions.

[Read More](#)



## Outside the Box After-School Program

Have fun with science education! This program is full of science experiments. Cost is \$110 and the program runs for five weeks starting on **Monday, October 23**. Register by **October 16** or until program is full.

[Download flyer here](#), register using button below, and contact [sara@outsidetheboxlabs.com](mailto:sara@outsidetheboxlabs.com) with questions.



[Read More](#)

## Izabella's Gourmet Chow

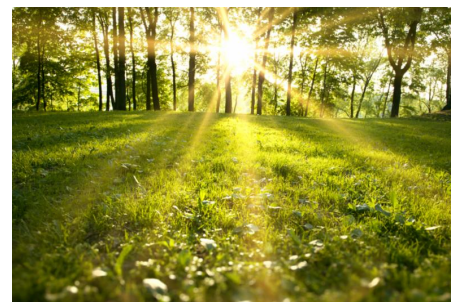
Come and join Izabella's Gourmet Chow in an after-school international expedition! Go around the world in six weeks, experiencing one cuisine at the time. Classes start **Tuesday, October 3**, and run for six weeks. \$160/student. Send questions to [IzabellasGourmetChow@gmail.com](mailto:IzabellasGourmetChow@gmail.com). Register by **September 29** or until program is full.



[Read More](#)

## Stormy Oaks Nature Explorers Program

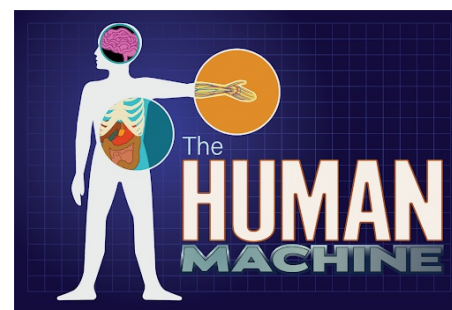
This program is aimed at forging a deeper connection with nature and getting students excited about the world around them. Students will meet live animals and engage in lessons, activities and more based on topics including citizen science, ecology and biodiversity. Program starts **Wednesday, October 4**, and runs for four weeks. Cost is \$75. Send questions to [mbrown@wildbirdrecovery.org](mailto:mbrown@wildbirdrecovery.org). Register by **October 2** or until program is full.



[Read More](#)

## The Human Machine

This six-week science and math enrichment series explores cell structure, tissues, organs and systems. Using physical tests, experiments and demonstrations, students will learn about the fascinating functions and abilities of the body, including super-human strength and endurance. Program is \$110 and starts **Wednesday, October 11**. Send questions to [mrsbatson@batsonindependenteducation.com](mailto:mrsbatson@batsonindependenteducation.com). Register by **October 2** or until program is full.



[Read More](#)

## In Case You Missed It

### Morning Fit Club Starts September 5

Work on fitness, play games, develop teamwork skills, and have fun before school! Help your student create a great morning exercise habit. Weekly sessions start **Tuesday, September 5**, at 7:30 am and will run for eight weeks. Register by September 3.

[Read More](#)

### Join Chorus at Eden Hall

Students interested in joining chorus must sign up each year. [Watch this short video](#) to learn more, and then click the button below to register for the 2023-2024 school year.

[Read More](#)

### Sign Up for the Talent Show

Show off your talents this fall! The 5th/6th grade show is planned for **October 18** and the 4th grade show will be on **October 24**. Practices start September 27.

[Read More](#)

### Support the EHUE PTO

Support the EHUE PTO by donating directly. Our no-fuss "Un-Fundraiser" is the only fundraiser where 100% of your donation benefits EHUE students and staff.

[Read More](#)

### Harvest Mum Sale

Harvest Mum Buddies are coming to Eden Hall! Let's welcome fall with lots of mums in our yards and our



neighbors' yards. Mums and buddies are for sale from \$15 to \$33. Proceeds benefit the PTO.

[Read More](#)



## Order Chromebook Cases

Eden Hall PTO is selling Chromebook cases to alleviate minor damage done to the computers. They fit all K-12 Chromebooks and will be delivered directly to the classroom at any school. Delivery in September.

[Read More](#)



## Shoe Drive

The Eden Hall Shoe drive us in full force! Bring your old shoes to Eden Hall. Any size—Any kind! EHUE PTO collected over 5,000 pair of shoes last year, raising over \$2,500. Help us again this year! Collection boxes are inside the vestibule at Eden Hall.



## Be a Homeroom Parent!

What a great opportunity to participate in your child's school year!

[Read More](#)



## Help Stock the Staff Lounge

Help EHUE PTO stock the staff lounge. Donations can be dropped at the office any time all year or you can order from our [Amazon wish list](#). The EHUE PTO tries to stock the lounge once a month, and with 120 staff, we could use your help!

[Read More](#)



## Before- and After-School Care

Before- and after-school care is available to Eden Hall students through Stepping Stones from 7:00 - 8:30 am and 3:00 pm - 6:00 pm.



[Read More](#)

## Reminders

- Friday Flash submissions are due Wednesdays at 8 am to [prnewsletters@pinerichland.org](mailto:prnewsletters@pinerichland.org).
- Submit [Shared Custody](#) and [Alternative Childcare Transportation](#) requests ASAP.
- [Free and Reduced Meal Applications](#) must be submitted each school year.
- [Children's Health Insurance Program](#) information.
- Check the [Friday Flash Archives](#) for past information.



Eden Hall Upper Elementary School | 3900 Bakerstown Road, Gibsonia, PA 15044 Phone: 724-443-1450

[Unsubscribe ehasinger@pinerichland.org](mailto:ehasinger@pinerichland.org)

[Update Profile](#) | [Constant Contact Data Notice](#)

Sent by [prnewsletters@pinerichland.org](mailto:prnewsletters@pinerichland.org) powered by



Try email marketing for free today!